

# Welcome to P1 Orientation

(2024 Cohort)

17 November 2023



If you have any questions,  
do scan the QR code. We  
will address it during the  
Q&A session.

## Programme Flow

Time	Details of Event
9.30 am	Principal's Address
9.50 am	Assistant Year Head's Address & Briefing on First Day of School
10.10 am	School Hours & Routines by HOD Student Management
10.30 am	Sharing by PSG & Dads For Life
10.40 am	Q & A
11.00 am	End of Programme Parents will adjourn to the classrooms to fetch their children.



# School Leaders



**Mdm Pang Siu San**  
Principal



**Mrs Tye Low Lee Chern**  
Vice Principal



**Mrs Lim Li Li**  
Vice Principal



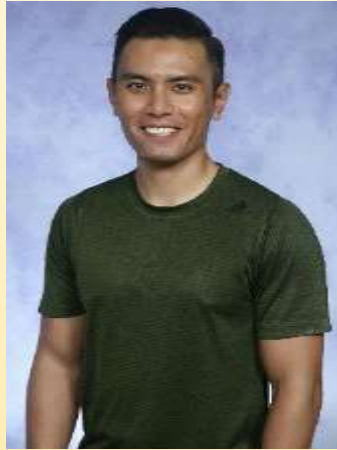
# Key Personnel



**Mr Kenneth Goh**  
Year Head  
Upper Primary



**Mdm Maisarah Supani**  
Year Head  
Middle Primary



**Mr Nurrizzat**  
Assistant Year Head  
Upper Primary



**Mr Caleb Chu**  
Assistant Year Head  
Middle Primary



**Mdm Noreeni Ismail**  
Assistant Year Head  
Lower Primary



# Key Personnel



**Mdm Larene Sim**  
**HOD English**



**Mdm Azizah Juma'at**  
**SH English**



**Mrs Karen Ting**  
**HOD Mother Tongue**



**Ms Angeline Lee**  
**SH Chinese**



**Mr Rohan Nizam**  
**SH Malay**



# Key Personnel



**Mrs Lisa Lee**  
HOD Mathematics



**Mrs Cheang Foong Lan**  
HOD Science



**Mdm Sultanah Ali**  
SH Science



**Ms Kuah Soh Ling**  
HOD CCE



**Ms Phua Li Xin**  
SH CCE



# Key Personnel



**Ms Sherlyn Seah**  
School Staff  
Developer (SSD)



**Mr Bryan Neo**  
HOD  
Student Management



**Mr Anthony Chia**  
HOD  
ICT



**Mr Shafiruddin**  
HOD  
PE/Aesthetics



**Mr Shahrudin**  
SH (PE)



**Ms Gracelyn Ong**  
SH (Aesthetics)





# Form Teachers

## P1 Unity



**Mdm Khoo Hui Hoon,  
Teresa**



**Ms Liu Mengkuan**



# Form Teachers

## P1 Respect



**Mdm Kartini**



**Mdm Chan Siew Leng**

# Form Teachers

## P1 Honesty



**Ms Manjusri**



**Mr Chan Sin Liang**

# Form Teachers

## P1 Love



**Mdm Diyana**



**Mr Bryan Neo**

# Form Teachers

## P1 Joy



**Mdm Siti Shafarina**



**Ms Phua Li Xin**

**Form Teachers**

# **P1 Tenacity**



**Ms Angeline Cheah**



**Mr Shafi**

# Form Teachers

## P1 Care



**Mdm Beh Choo Kim**



**Ms Chen Hui Ting**

# Form Teachers

## P1 Kindness



**Mrs Alyssa Wijaya**



**Mdm Ng Beng Koon**



# Principal's Address

***Primary 1 Orientation***  
***17 November 2023***

# 義薄云天立：Righteous Spirit



誠敬毅忠

# 安求 赤子心 : Pure Heart



诚 敬 毅 忠

应该有对世间万物的**好奇心**，也就是用**求索的心态**，**追求真理**。

**Wonderment** : Love for Life, Joy for Learning



ONWARD in **UNITY**

3 Beliefs  
2 Challenges  
5 Specials  
4 vs  
6 NGEE ANN  
*Years of Joyful Learning*



# 1

**Ngee  
Ann**  
1940

130 Staff

1440 Students





# 2 Challenges

A wide spectrum of student profile



Curriculum Differentiation Catering to Different Learners

Uplifting and Stretching Efforts  
Supporting Learners' Needs

# 3 Beliefs

We believe that all children have the ability to learn and the potential to excel.



- School Vision

**A Vibrant School**

**to**

**Learn with Passion**

**and**

**Serve with Pride.**

- School Mission

To nurture every child to his Best

# 4 Values

**INTEGRITY OUR CORNERSTONE**



**RESPECTFULNESS OUR NATURE**



**RESILIENCE OUR FORTITUDE**



**COMMITMENT OUR PLEDGE**



# 5 Specials



LLP: GRACE



ALP: Sustainable Green



Character & Citizenry



Student Well Being



Co-Curriculum Activity

# 6 *Years of Joyful Learning*



# Programmes for Holistic Development



## Ability Driven

- Differentiated needs
- Curriculum Customisation
- Special Needs
- Talent Development



## Curriculum

- Moral
- Social
- Cognitive
- Physical
- Aesthetics



## Co-curriculum

- Heathy Lifestyle
- Character & Citizenry
- Leadership Development
- Outdoor Environmental Education
- Internationalisation
- ICT and Media
- CCAs

**Learning for Life Programme : GRACE** GRowing Appreciation for Creative Expression  
**Applied Learning Programme : STEM** –Sustainable Green



Engaging Environment , Enriched Learning  
ALP: Sustainable Green

“ LOOK DEEP  
INTO nature,  
AND THEN  
YOU will UNDERSTAND  
EVERYTHING  
BETTER. ”  
Albert Einstein





Engaging Environment , Enriched Learning  
LLP: GRACE



EVERY  
CHILD  
IS AN  
ARTIST  
-PICASSO



# JOY of LEARNING



# Places for Joy of Learning



義安軒

**L.I.F.E @ Ngee Ann**





# People make the difference

## Positive Staff Climate



# Pupils making it happen



# Learn with Passion



- Holistic Assessment & Learning Disposition (ACTIVE)
- Upstream Support for Learning
  - ENABLE – **EN**glish **A**ptitude **Bo**l**st**Er**ing** Programme
  - MABLE – **MA**thematics **B**ridging & **LE**arning Programme
  - SABLE – **S**cience **ABLE** Programme
- Motivation through Formative Assessment
  - Formative Assessment
  - Peer Assessment and Self Assessment
- Exploration and Application
  - Maths – Learning Experience
  - Science – Exploratory Tasks, Design Thinking
  - English – Knowing SEA through Literature Programme
  - MTL – Speech & Drama

# Building a Culture of Care

## Serve with Pride



### **Strong Student Development Team**

- Character Champions
- Peer Support Structure
- Student Leadership opportunities

### **Support for High Needs and SEN students**

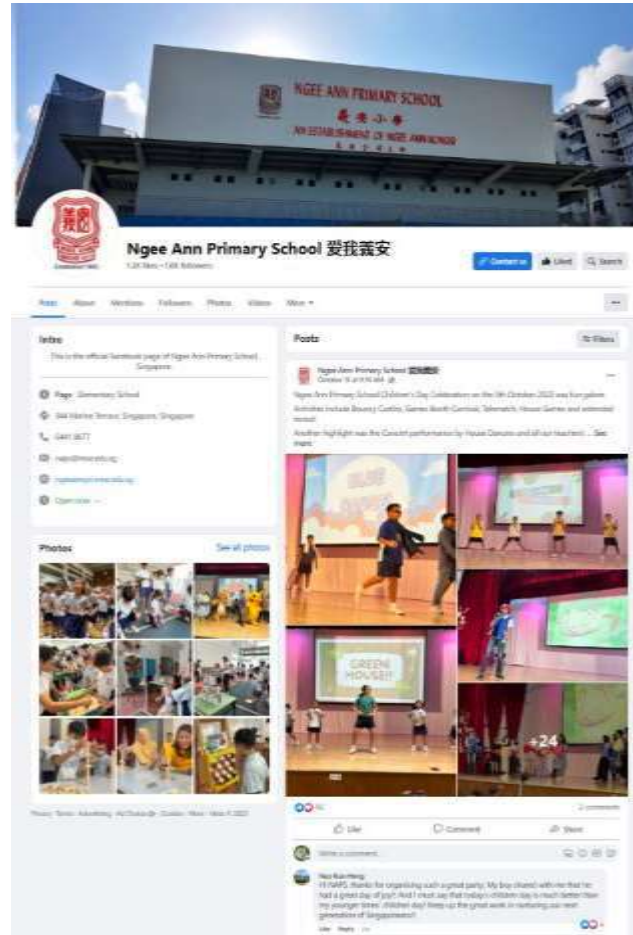
- Spark programme
  - Life skill, SE Competencies, Sense of pride and belonging
  - Play-based Learning for Literacy and Numeracy
- A team of SEN Officers

## Preparing Future Learners





<https://www.facebook.com/Ngee-Ann-Primary-School-爱我義安>.



# Partnership for Success

## THE PARTNERSHIP

Parent Support group

NAPS Dad for Life



## THE COMMUNITY

THE HUT



FSC



MARINE PARADE FAMILY  
SERVICE CENTRE

BE MARINE TERRACE #01-227 B(640888)  
100 BUREAU LANE #04-0008 810 028888  
8101027865245

## Partnership for Success



**Be.....**  
**Informed**  
**Interested**  
**Involved**



# Partnership in Education

## Join our PSG

### Parents in Education

Conducive and wonderful  
learning experience  
for **you** and your **child**  
as **we** journey with you  
for the next **6 years**  
in **Ngee Ann Primary School**



# In the PANDEMIC Stay SAFE Stay HEALTHY





**In the PANDEMIC**  
**Stay CURIOUS Stay ENGAGE**



**Stay POSTIVE Stay JOYFUL**





ONWARD in **UNITY**

# Growth Mindset







**Stronger  
Together**

**Ngee Ann Primary School**

# Positive Attitude

towards

**Learning**

**Teachers**

**Parents**

**Peers**



**Assistant Year Head's  
(Lower Primary)  
Address**



Ministry of Education  
SINGAPORE

# A GREAT START TO PRIMARY SCHOOL



# OVERVIEW

## 1 What Is It Like in Primary School?

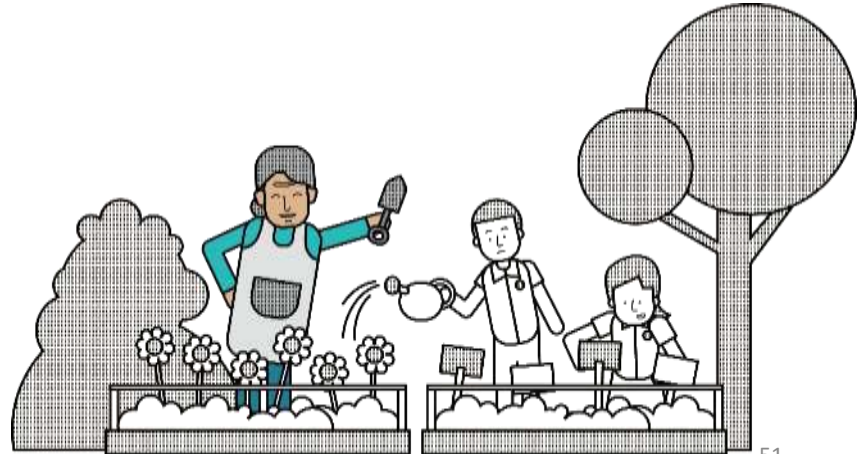
## 2 Transition to Primary 1



## 3 School-Home Partnership

# WHAT IS IT LIKE IN PRIMARY SCHOOL?

- Laying a strong foundation
- Nurturing well-rounded individuals and passionate lifelong learners
- Providing learning opportunities that recognise their strengths and develop their full potential
- Preparing our children for the future



# WHAT EXPERIENCES WILL MY CHILD GO THROUGH IN PRIMARY 1?

## **Holistic Assessment**

- Focuses on building greater confidence and nurturing a stronger intrinsic motivation to learn so as to develop your child's potential
- No examinations and weighted assessments at Primary 1 and Primary 2 to ease your child into formal schooling
- Use of appropriate assessment modes to provide useful information to support students' learning and holistic development

# TRANSITION TO PRIMARY 1

When your child enters primary school, they will experience:





# HOW CAN I PREPARE MY CHILD FOR PRIMARY 1?

**In primary school, your child will be equipped with skills to:**

- Adjust to a larger learning environment
- Interact with more peers and teachers
- Adapt to longer school hours
- Become more independent and responsible



<https://go.gov.sg/transition-to-primary1>

# HOW CAN I SUPPORT MY CHILD THROUGH THE TRANSITION?

- **S**upport your child and encourage them to overcome challenges with you
- **A**ffirm your child by recognising small successes and praising their efforts
- **F**amiliarise your child by easing them into new routines and sharing with them your experiences in primary school
- **E**mpathise and acknowledge your child's feelings



Supporting your child's transition through  
**Primary 1**  
Build a caring home environment, to nurture the social and emotional skills of your child using these S.A.F.E. tips.

**SUPPORT**

- Consult some time every weekend to **play games and have fun together**.
- Visit places or take part in events that **both of you enjoy**.
- Encourage your child to **make new friends**.
- Try out **FTGP<sup>®</sup> Family Time activities**.

**AFFIRM**

- Encourage your child when he makes **observations**.  
E.g. "That's interesting!" and ask why he/she said that.
- Recognise small successes. E.g. "You've made another new friend to play with!"

**FAMILIARISE**

- Find out what primary schools have in store for students these days.
- Do practical things to **ease your child into new routines**.  
E.g. Plan daily routines together, teach your child new habits like packing his/her bag.

**EMPATHISE**

- Teach your child words that **describe feelings**.
- Acknowledge your child's **emotions**.  
E.g. "It's okay to feel nervous about starting school."
- Understand your child's **needs**. E.g. Start bedtime early. Children need a lot of sleep.

Spending Time Chatting. Use T.A.D.


**Talk**  
Talk about fond memories of your own school days.  
E.g. "When you did in Primary One, how would you feel if you were in Primary One now?"

**Ask**  
Ask about his/her thoughts and feelings about the school.  
E.g. "FTGP activities when he/she felt happy."

**Discuss**  
Discuss together what can be done if he/she has worries at school.  
E.g. "If he/she has people who are with worries."

**QUICK TIPS**

- Listen without interrupting.
- Put your hand over your mouth and ask questions to show interest and affirmation.



© 2014 Singapore Education Services. All rights reserved. For more information, visit [www.education.gov.sg](http://www.education.gov.sg).  
This document is the property of the Singapore Education Services. It is not to be reproduced, stored in a retrieval system, or transmitted in any form or by any means, electronic, mechanical, photocopying, recording, or by any information storage and retrieval system, without the prior written permission of the Singapore Education Services.

# WHAT DOES MY CHILD NEED AT PRIMARY 1?

NEW

- Every child develops at a different pace
- Some children learn things earlier, others need more time
- Allowing them to learn at their own pace helps them enjoy the learning process
- Some skills that parents can develop are:
  - Relating to others
  - Developing good habits
  - Nurturing positive learning attitudes



**SCHOOLBAG**  
THE EDUCATION NEWS SITE

HOME EDUCATION FEATURES TEACHERS' DIGEST MULTIMEDIA FAQ

Home > Put the books down! 6 skills your child really needs for P1

## Put the books down! 6 skills your child really needs for P1

14 JUN 2021



MCE Stock Image (Photos taken before COVID-19)

Like 1.7K Tweet 100+ Share 1

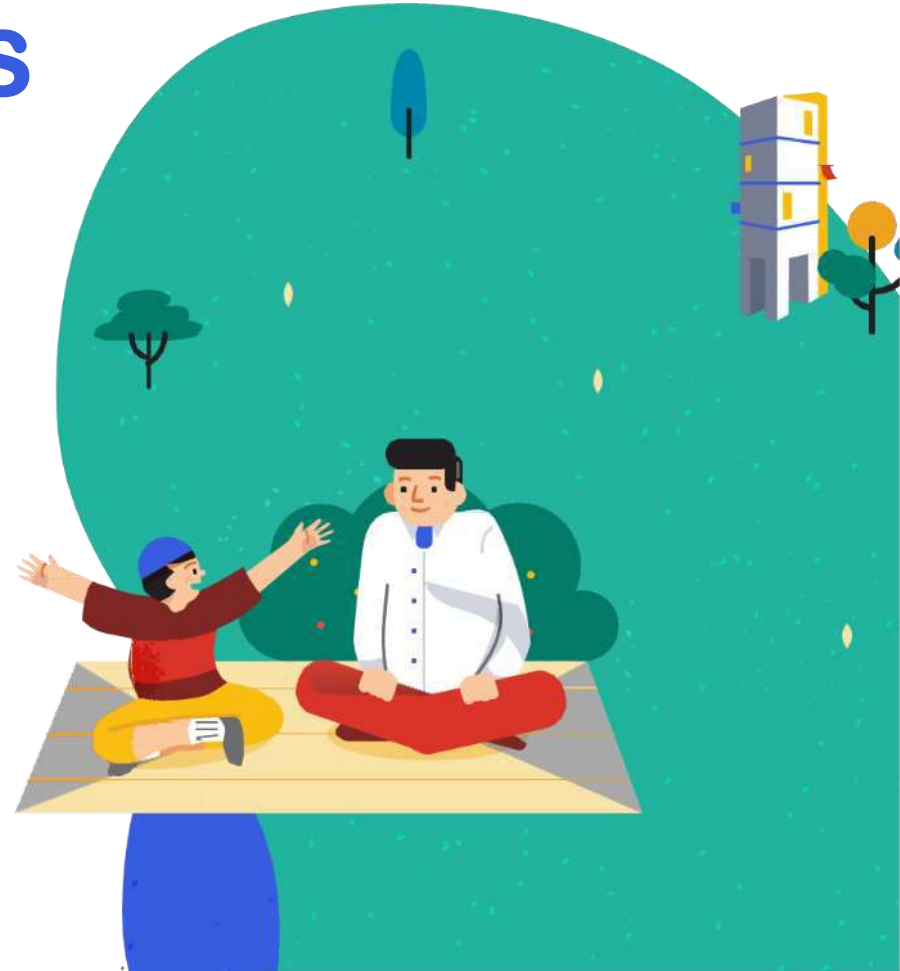
Mastering the ABCs is well and good but having seen 28 years of children enter primary school through her doors, Mrs Marjorie Seek of CHJ Katong Primary observes that these six soft skills are even more essential in preparing students for primary school.

Entering Primary 1 can be a big step for a child — and the parents. While parents often consider

# RELATING TO OTHERS

## Build your child's interpersonal skills by:

- Modelling the use of friendly and polite phrases
  - "Hello! My name is...What is your name?"
  - "May I please..."
- Providing opportunities for your child to share and take turns during playtime with other children



# DEVELOPING GOOD HABITS

**Routines help your child build confidence and learn to manage themselves.**

**Guide your child to do the following independently:**

- Dress themselves
- Buy food at the canteen
- Make healthy food choices
- Pack their bag
- Wash their hands
- Take their temperature using a thermometer

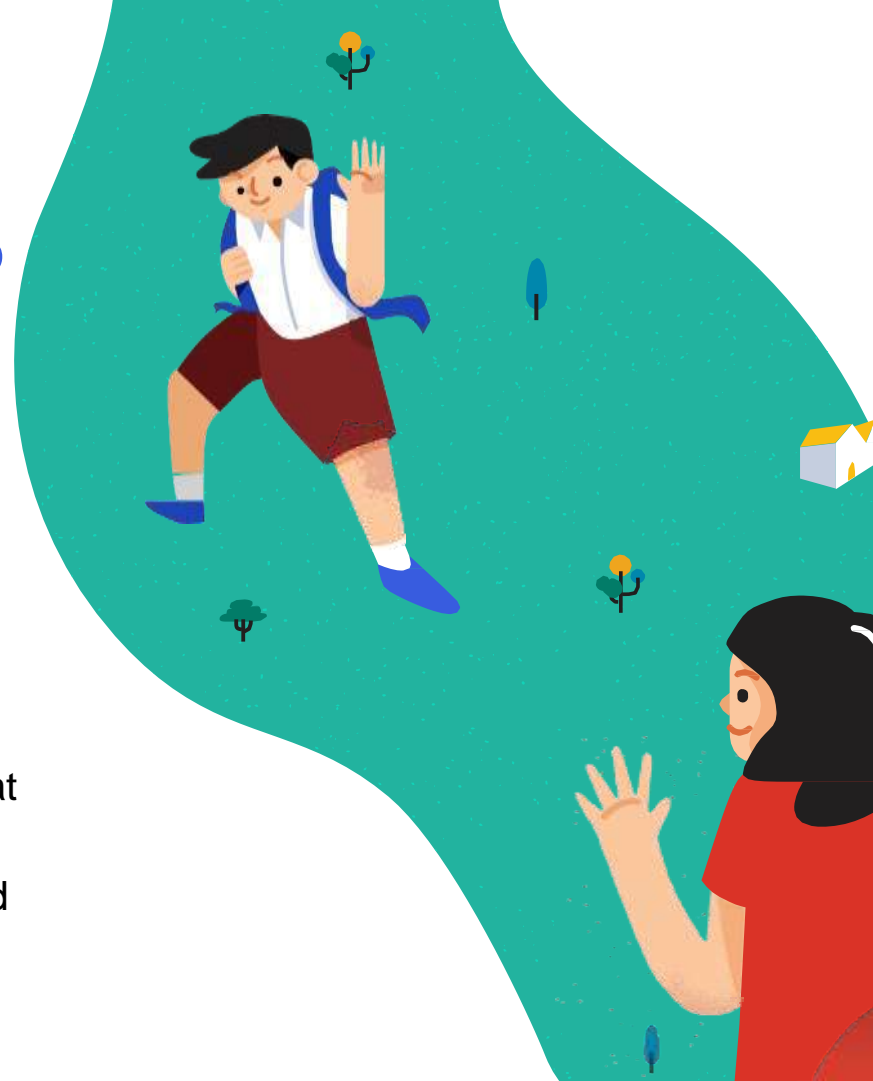


# NURTURING POSITIVE LEARNING ATTITUDES

**Developing the right learning attitude will help your child learn better.**

You can encourage your child to:

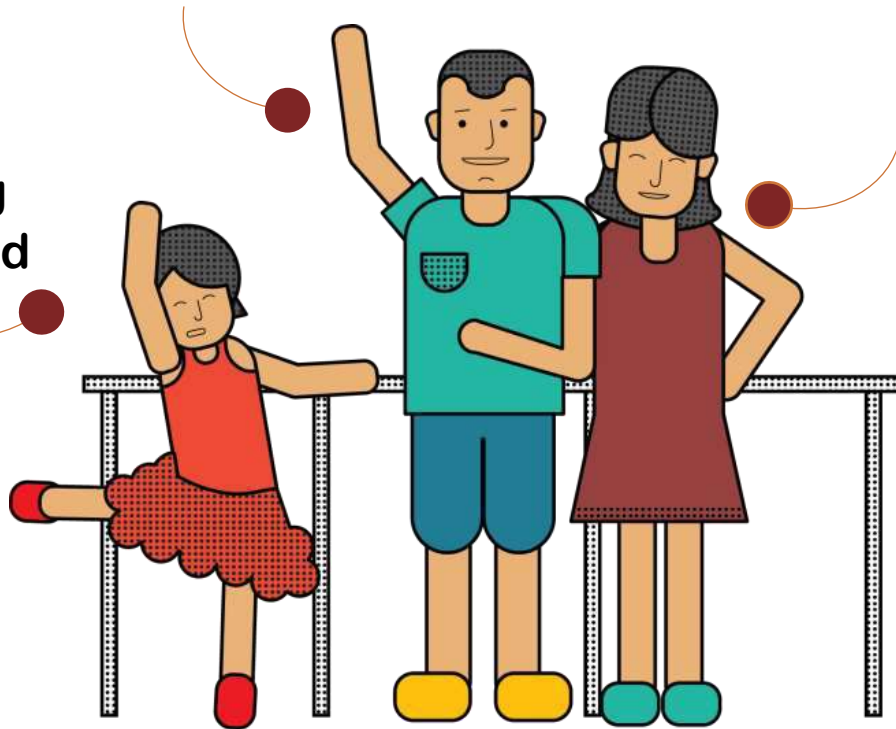
- Ask questions about their experiences and the world around them
- Express their thoughts and feelings and discuss what can be done if they have worries
- Practise life skills independently like buying food and drinks on their own and asking for permission



# SCHOOL-HOME PARTNERSHIP

## 2 Developing your child

### 1 Knowing your child



### 3 Building partnership with the school



# KNOWING YOUR CHILD

## Understand your child's strengths and interests.

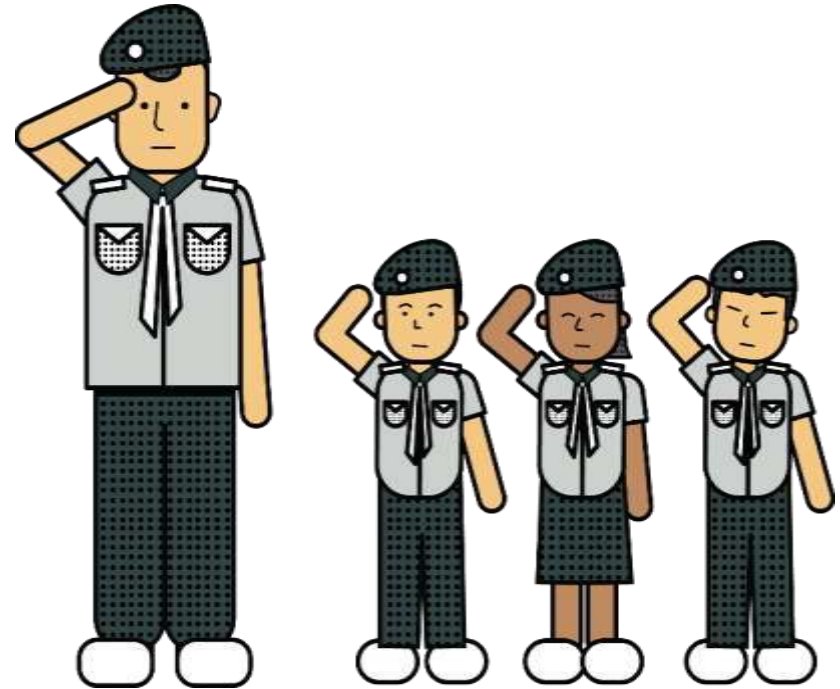
- Work with your child's teachers to understand their strengths, interests and development in academic and non-academic areas
- Ask about your child's thoughts and feelings about school



# DEVELOPING YOUR CHILD

## Partner the school in the holistic development of your child.

- Allow your child to develop independence
- Encourage your child to participate in school activities
- Talk to your child regularly about values and nurture their interest in learning
- Affirm your child by recognising their efforts



# BUILDING PARTNERSHIP WITH THE SCHOOL

NEW

## Communication with Parents

- Termly Letters
  - Information and calendar for school activities
  - Given out at the end of each term for the next term
- Level Letters
  - Information about programmes and activities planned for the level
  - Given out by Week 2 of each term

All communication letters will be sent via Parents Gateway and will also be uploaded on school website.



# BUILDING PARTNERSHIP WITH THE SCHOOL

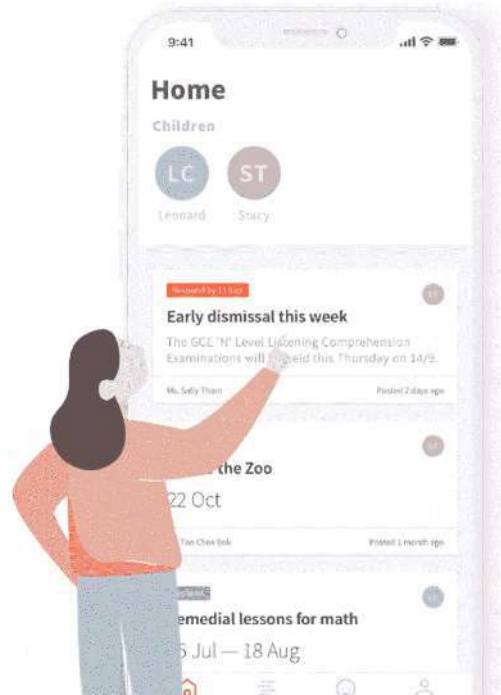
## Communication with Parents

- Student Handbook
  - Record of daily homework and/or messages for/from parents/guardians
- Teachers' emails
  - Form/Co-Form/Subject Teachers for class or subject matters
  - AYH/Year Head for level matters
  - IP HODs for subject matters
- Feedback to [naps@moe.edu.sg](mailto:naps@moe.edu.sg)
- Leave a message at General Office



# PARENTS GATEWAY

NEW



# PARENTS GATEWAY RESOURCES



Schools may access the video via:

<https://youtu.be/PCM5o8jAncc>



Schools may access the video via:

<https://youtu.be/tW9jwyuovOo>

**SCHOOLBAG**  
THE EDUCATION NEWS SITE

HOME EDUCATION FEATURES TEACHERS' DIGEST MULTIMEDIA FAQ

Home > Every Parent's Buddy: The Parents Gateway app

## Every Parent's Buddy: The Parents Gateway app

23 AUG 2022

5 reasons to sign up for the Parents Gateway app if you haven't done so already.

Related

- Every Parent's Buddy: The Parents Gateway app
- Strengthening Community Ties Through Social Media

Let's get started

We'll be retrieving your child's information

<https://go.gov.sg/every-parents-buddy-the-parents-gateway-app>

# PARENT-CHILD ACTIVITY BOOK IS AVAILABLE ONLINE!

## PARENT-CHILD ACTIVITY BOOK (DIGITAL)

**10 TIPS FOR PARENTS** to help you navigate your child's first year in primary school.

- Chat with your child**
- Boost their confidence**
- Practise various scenarios**
- Create something interesting**
- Thank others for their help**
- Pledge to do things together**





# WE ARE HERE TO SUPPORT YOU!

NEW

## FAMILY VALUES CARD GAME

*Developed by Families for Life, in partnership with the Ministry of Education*

- Designed for parent-child bonding and provide opportunities to discuss about family values as a family
- Families can learn how to play the game by scanning the QR code on the game box
- Parents are encouraged to make use of the conversation starters included in the rulebook to engage children in understanding and demonstrating the family values of **love, care and concern, commitment and respect**



**YOUR CHILD IS READY.  
ARE YOU?**



# First Day of School is 2 Jan 2024 (for P1s only)

## Arrival



Silent reading  
before flag raising  
ceremony

Flag raising  
ceremony starts  
promptly at 7.30 am  
every day



Good practice to  
report to school 10 to  
15 minutes before  
school starts.

# What to Bring

- Bring only the stipulated books for each day.
- Write the name and class of your child/ward on all books and materials
- Bring a story book for silent reading before flag raising ceremony
- Bring healthy food for 10-minute Snack Time.



**Examples of  
Snacks**

# Important!

Don't forget the Name tags with the lanyard (Fill in the details at the back for dismissal arrangements))



**TAN NGEE ANN**

**1 UNITY**

**Parent's Contact:**

---

**Dismissal (please tick (v) one):**

- Gate 1
- Gate 4 (Blk 4)
- Student Care (ACE @ Work)
- School Bus



# First Week Recess

9.00 – 10.00 a.m.

Teachers will be around to assist the students





# Second Week Recess

## Buddy System

A Primary 4 student of the same gender will be assigned to be the Buddy of your child/ward in Week 2





# School Dismissal

- \* 1.30pm (Mon-Thu)
- \* 1.00pm (Fri)
- \* All P1 students will be dismissed at **1.00 p.m.** on the first week of school, **Tuesday, 2 Jan 2024 to Thursday 4 Jan 2024** and **12.30 p.m. on Friday 5 Jan 2024**
- \* Parents/Guardians who are picking your children/wards during school dismissal, are to wait for them **outside Gate 4 or Gate 1.**



# WE LOOK FORWARD TO WELCOMING YOUR CHILD @ NAPS NEXT YEAR





**HOD**  
**Student Management's**  
**Address**

# School Hours

---

<b>7.30 a.m.</b>	<b>Start of school</b>
<b>9.30 - 10.00 a.m.</b>	<b>1<sup>st</sup> Recess (P1 &amp; 4)</b>
<b>10.00 - 10.30 a.m.</b>	<b>2<sup>nd</sup> Recess (P2 &amp; 5)</b>
<b>10.30 - 11.00 a.m.</b>	<b>3<sup>rd</sup> Recess (P3 &amp; 6)</b>
<b>1.30 p.m.</b>	<b>Dismissal (Monday to Thursday)</b>
<b>1.00 p.m.</b>	<b>Dismissal (Friday)</b>
<b>*Before 7.30 a.m.</b>	<b>Silent Reading:</b> <ul style="list-style-type: none"><li><b>• Odd Weeks - English Book</b></li><li><b>• Even Weeks - Mother Tongue Book</b></li></ul>

# Opening Hours of School Gates

( Student Handbook 2024)

Gates	Before School	After School
Gate 1 (Side Gate)	6.30 a.m. – 7.30 a.m.	2.00 p.m. – 6.00 p.m.
Gate 2 (Main Gate)	6.30 a.m. – 7.00 a.m. (Gate will be closed after 7.00 a.m. for children’s safety)	Cars are allowed into the school compound on rainy days and for pick-up only after the school buses leave.
Gate 4 (HDB)	6.45 a.m. – 7.30 a.m.	Mon – Thu: 1.30 p.m. – 2.00 p.m. 3.00 p.m. – 5.30 p.m. (except Thu) Fri: 1.00 p.m. – 1.30 p.m. 2.30 p.m. – 4.30 p.m.

# Gate 4

---



# The Pavilion

(Student Waiting Area)

---





# Parents Waiting Area

---

( Block 4 Void Deck )



# Gate 4

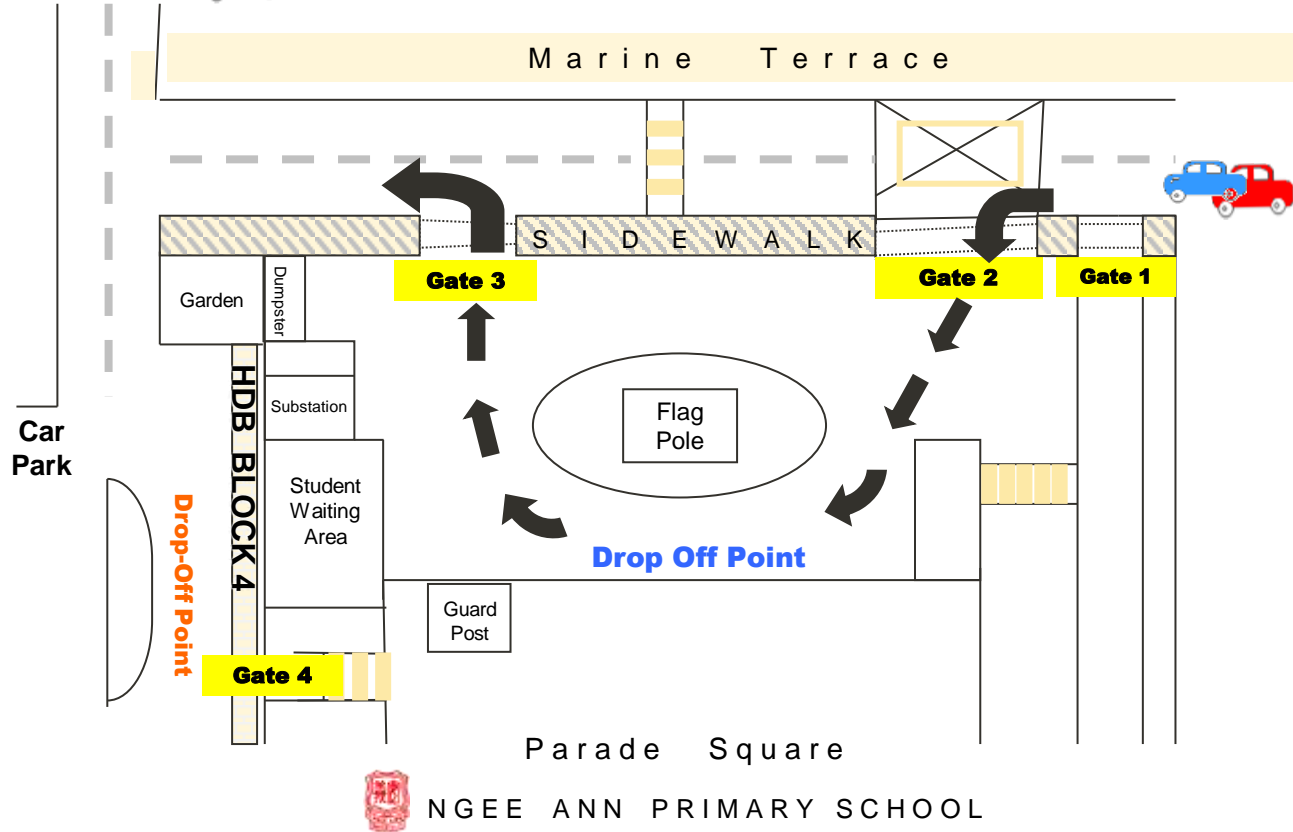
If you drive, please alight/pick up your child/ward at the car porch leading to Gate 4.





- Before 7.00 a.m.
- After 7.00 a.m.

# Morning Arrival



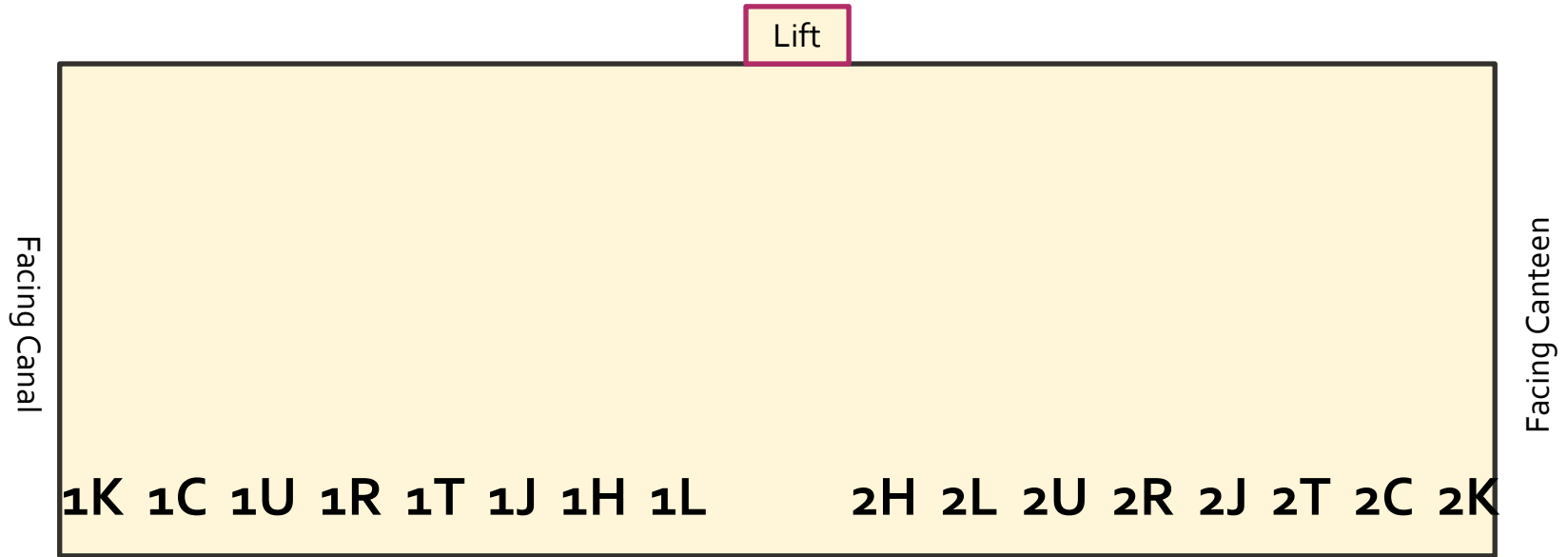
# For our students' safety...

---

- Slow down or stop at pedestrian crossings
- Reduce Block 4's carpark traffic congestion:
  - Drop off quickly in the morning
  - Do NOT park & wait at or near drop-off point
- Alternative drop-off at carparks serving Blk 5 to 8 or Blk 53
- Do NOT make U-turn outside front gate of the school
- Work with the school traffic marshals

# Morning Assembly Area @ Basketball Court

*Assembly from Day 2 onwards*



Indoor Sports Hall (Basketball Court)

# School Attire and General Appearance

Students must wear the prescribed uniform and modification to the uniform is not allowed.



Name-tag (ironed-on)  
above school crest

T-shirt should not be  
tucked in

Knee-length culottes/  
shorts

White plain socks  
**(No ankle socks)**  
White shoes



# School Attire and General Appearance



## For Girls:

Short hair must be kept neat and the back of the hair should not go below the shirt collar.

Fringe should not touch the eyebrows.

Long hair should be neatly tied up with plain dark blue or black hair accessories.

May wear only one pair of simple ear studs either in gold or silver.

## For Boys:

Must be clean shaven and no wearing of beard and moustache.

Hair must be kept short and neat.

Fringe should not touch the eyebrows.

No dyeing, colouring or highlighting of hair is allowed.  
No wearing of jewellery or accessories except a simple watch.





Established 1940

# NAPS PARENT SUPPORT GROUP

# 2023 PSG Events



Established 1940





Established 1940

# Dads@NAPS

In support of  **DADs**  
**forLife** Movement



**Fathers play an important role in their child's development**

**VIDEO:**



## **What Prisoners Taught Me about Parenting**

**By Jason Wong**

Founder of Dads for Life Movement

Chairman of the Board of Focus on the Family Singapore



**More cognitively competent**

Better academic achievers

**More emotionally stable**

Able to handle stress, resilient

More curious and eager to explore

**Involved  
Dads**

**More sociable**

Able to relate to others

Better peer relations, more popular & well-liked

**Less delinquent behaviors**



Dads@NAPS was formed in 2009.

**Objective:** Inspire and involve fathers of NAPS pupils to

- Play a more active role in their children's lives
- Be life-long positive influencers on their children

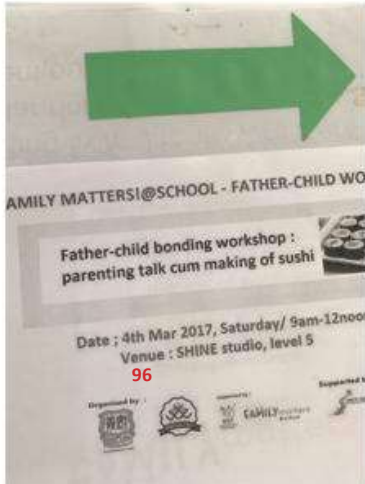
**How do we do this?**

1. Increase awareness of the importance of involved fathers
2. Get fathers to be good role models for their children
3. Provide opportunities for fathers to bond with their children





# SUSHI MAKING



# BREAKFAST WITH DAD





# PULAU UBIN HIKING





FAMILY MATTERS!@SCHOOL - FATHER-CHILD BONDING ACTIVITY



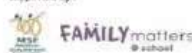
**Date/Time: 4th Nov 2017/10am-12noon**  
**Venue: Kallang Bowling centre, Kallang Leisure Mall**

**Maximum 30 father-child pairs on first come first serve basis**

Organised by :



supported by :



FOR : Father and child of Ngee Ann Primary School  
DURATION : 2.5 hours

# CLIP 'N CLIMB ROCK CLIMBING



**DADs**  
forLife







# MACRITCHIE TREETOP WALK





# MAGIC BOND



**DADs**  
forLife



# DRAGON BOATING





### Term 1:

- I-CAN Workshop to equip dads with handles to engage their child
- Nature Hiking/ Cycling Expedition

### Term 2:

- Community Service with special-need kids
- Dragon Boating

### Term 3:

- Prata Making/ Magic Bond
- Rock Climbing/ Laser Tag

### Term 4:

- Forest Adventure/ Kelong Fishing
- Stayover in School

*We need you  
To make it happen!*



Follow NAPS PSG on  
Facebook



Join NAPS PSG





Established 1940

**NAPS PARENT SUPPORT GROUP**

**DADS@NAPS**

# Q & A

# Q & A

Can the teacher help set up a chat group with the parents so we have a platform to seek clarifications or follow up from school admin when needed?



# Q & A

Does participation in CCA starts from P1?

# Q & A

My child has Special Needs. I would like to know how NAPS can help my child.

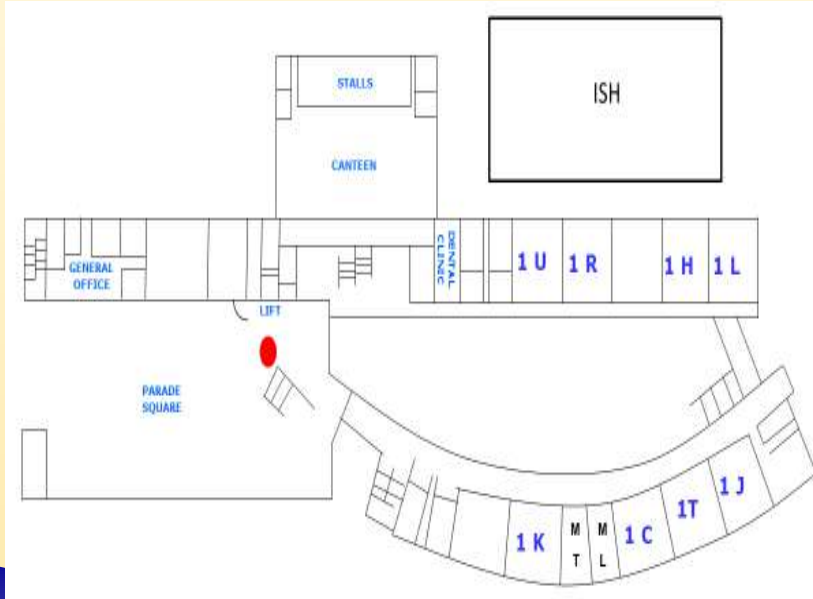
# Q & A

How does the school manage incidents (e.g. safety, hurtful behaviour, conflicts, misbehaviour) in school?

# Q & A

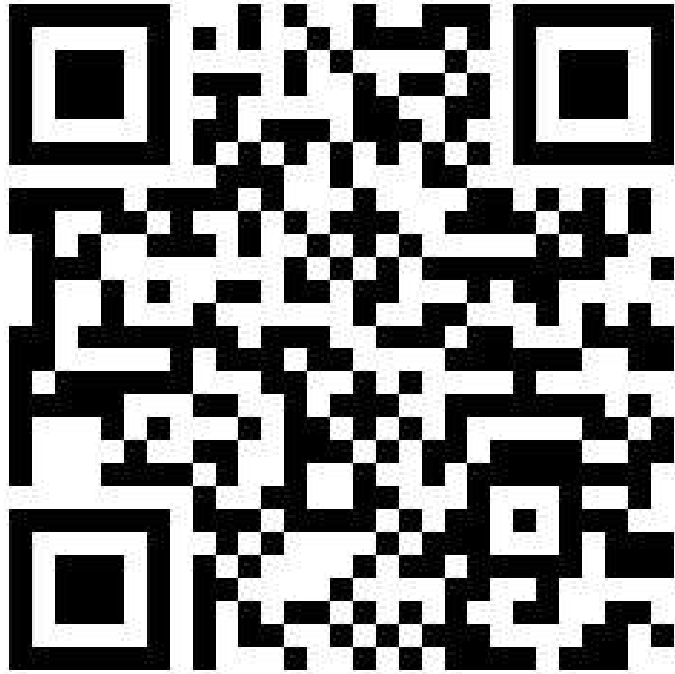
My child has applied for the Financial Assistance Scheme (FAS). Can I go ahead to purchase the school books and school uniforms from the vendors and claim later?

# Open for Business



Canteen  
Student Care Centre  
Bus Vendor  
Uniform  
Bookshop

# Thank You



Kindly Scan the  
QR code for  
your attendance  
today.